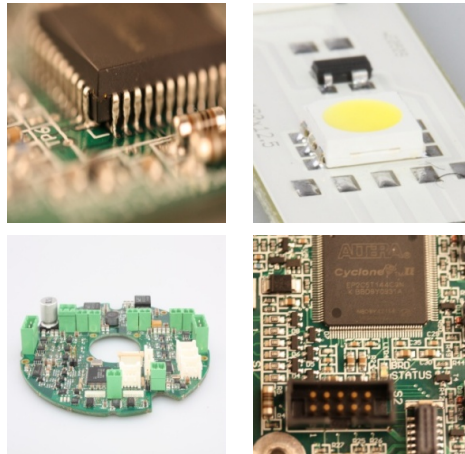


SMD / THT Assembly



Variants

- SMD, THT on both sides
- Mixed THT, SMD
- Rigid, flexible circuit boards
- Aluminum circuit boards
- Component size starting at 0201
- Fine pitch
- Lead-free
- Tracked assembly

Production systems

- Fully automatic SMD line
- Stand-alone for small runs
- AOI
- Multiple flow soldering system
- Vapor-phase soldering systems
- Selective soldering system
- Drying chambers
- Humidity-controlled rooms
- Air-conditioned production

Know-how

- Layout design (Protel)
- Development of test environment
- Test adapter (needle adapter)
- Production according to ISO...
- Material logistics

Capacity

- 40,000 components per hour
- Production runs typ. 100 to 1000
- Mass production up to 10,000/week
- Prototypes: stand-alone systems

Applications

- Mechanical and electrical engineering
- Medical devices
- Lighting

Packaging

- ESD trays
- Cardboard packages

Values specified are typical, but not binding.